
INFORMATION SHEET

WOLVERINE PIT ACCESS REALIGNMENT

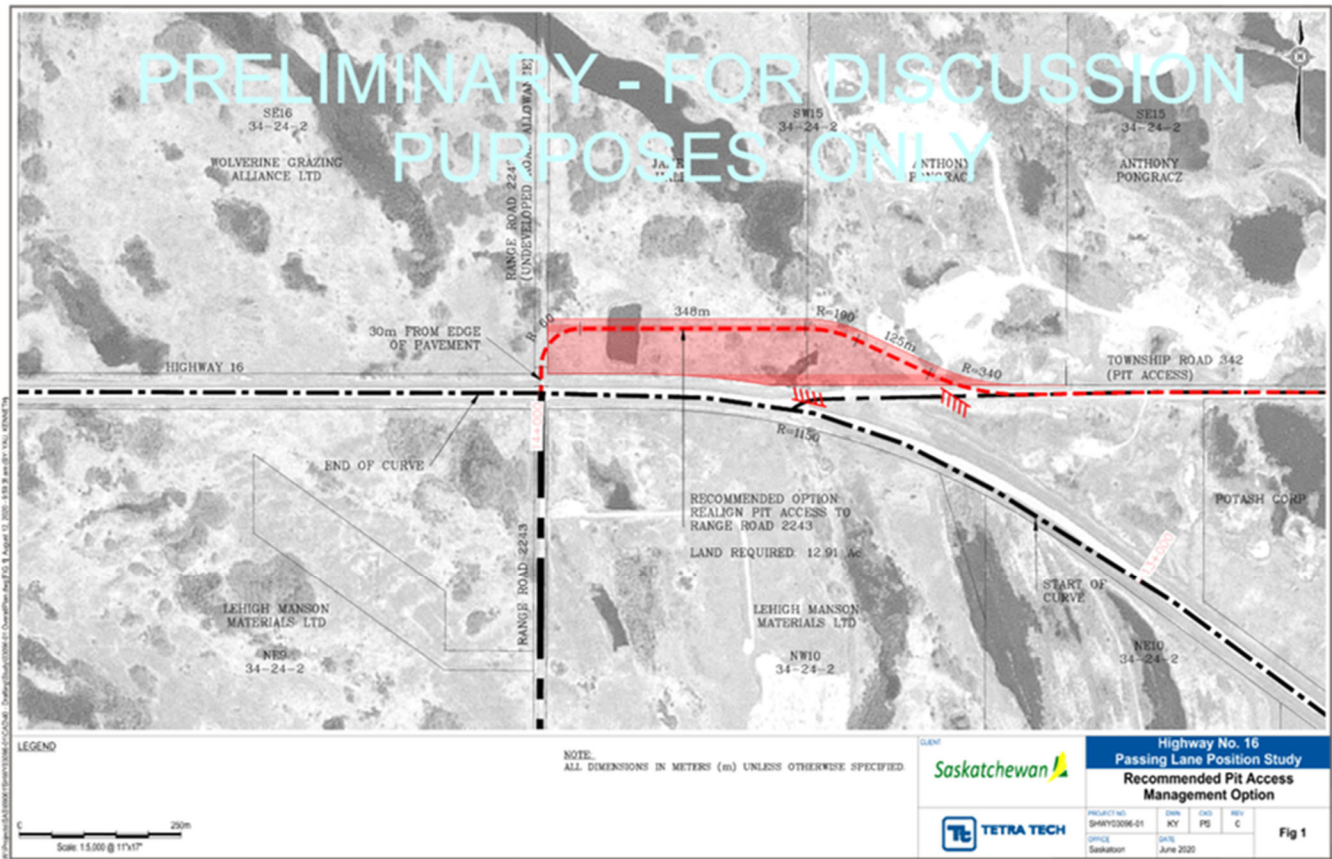
The Saskatchewan Ministry of Highways and Infrastructure (the Ministry) is currently establishing plans for several upgrades to the Highway 16 corridor between the junction at Highway 6 (Quill Lakes) and the Bradwell access. This includes the possible implementation of passing lanes and upgrades to several accesses. Tetra Tech Canada Inc. (Tetra Tech) was retained to identify the positioning of seven sets of passing lanes as to identify improvements to several key intersections including the Wolverine Pit access. This information sheet focuses on the Wolverine Pit access (or Township Road 342), which is located approximately 8 km (or 5 miles) immediately east of Plunkett.

The Ministry's intent to review the Wolverine Pit access was to identify possible improvements that would address safety concerns such as:

- Removing the intersection off a horizontal curve
- Improving the sight distance specifically of westbound vehicles entering Highway 16
- Eliminating the skew between the access road and Highway 16
- Facilitating the turning of larger vehicles between the pit access and the east leg of Highway 16

Options were reviewed to determine a recommended plan that would address these safety concerns and meet Ministry requirements. These options were discussed with the Ministry and local Rural Municipalities, with the recommended plan falling out from these discussions, as illustrated below. The Ministry intends to proceed forward with the next steps of implementation of this plan. Please note that this plan is subject to revision based on the completion of the next steps of the work, which include detailed design and tender preparation. The information shown is preliminary for the purposes of illustrating the recommended improvements only.

The recommended plan will create an all-direction (four-leg) intersection at Range Road 2243, with the current access approach to be obliterated (shown by the red hashes) and realigned as shown by the red dashed line. The land required is currently owned by the Government of Saskatchewan but used as cattle grazing leases. Discussions with those affected have been completed as part of this study.



The intent of this information brief is to advise ratepayers as well as members of the public that may use this access road and its intersection at Highway 16, of the proposed plan and to facilitate any feedback. Questions regarding the recommended plan can be directed to either:

Leane Campbell, Regional Manager, Tetra Tech
 Direct Line – 306.659.6106; Email – leane.campbell@tetrattech.com

Paul Steel, Transportation Planning Lead, Tetra Tech
 Direct Line – 403.998.1113; Email – paul.steel@tetrattech.com